



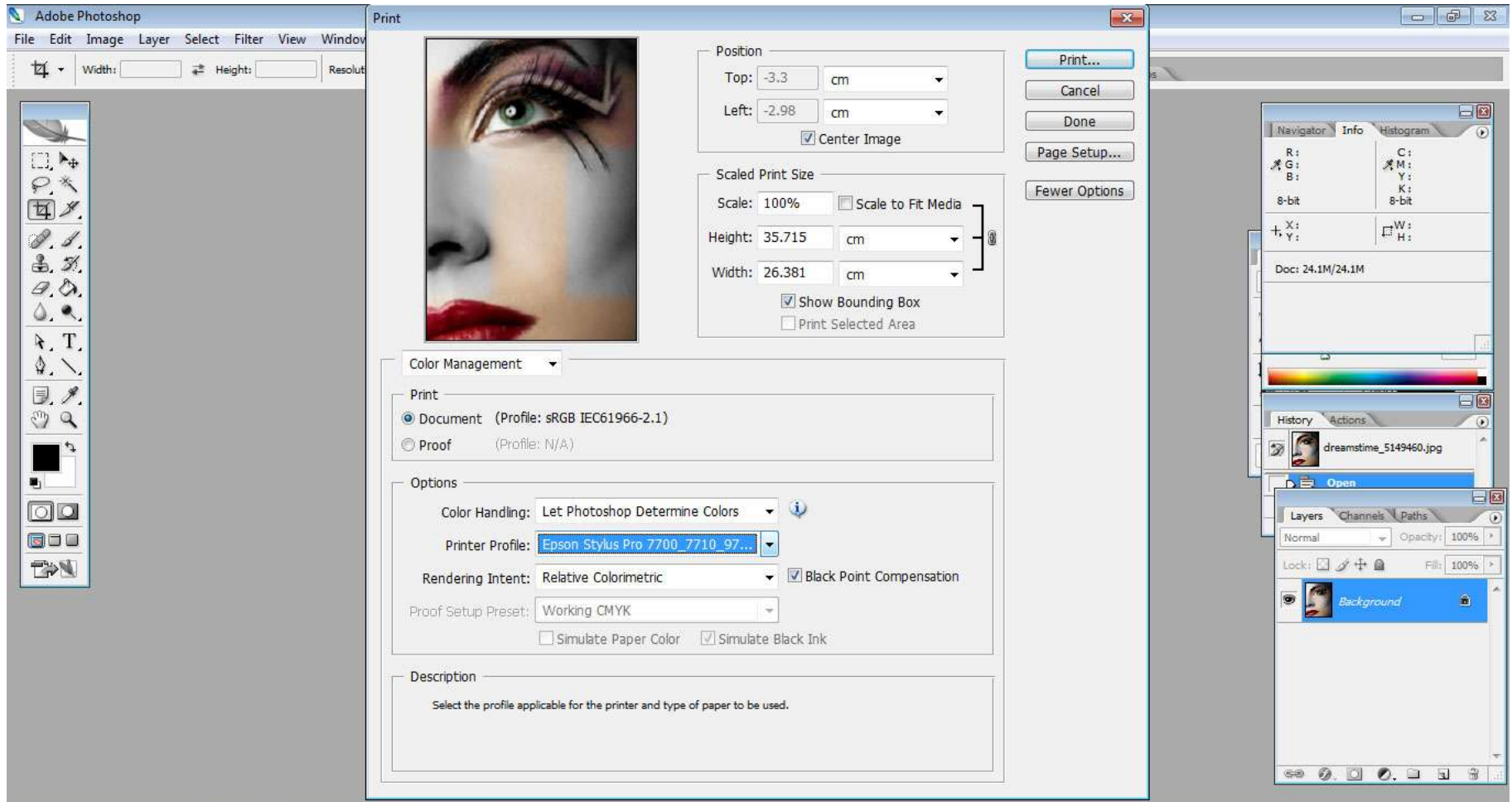
How to Print on 9700 using Photoshop

After finishing your design

After finishing your design and make sure of the sizes of your picture memorize it
1st go to File (menu)- Print with preview
It will open like picture below.



When you click on print with preview it will open new window as shown below



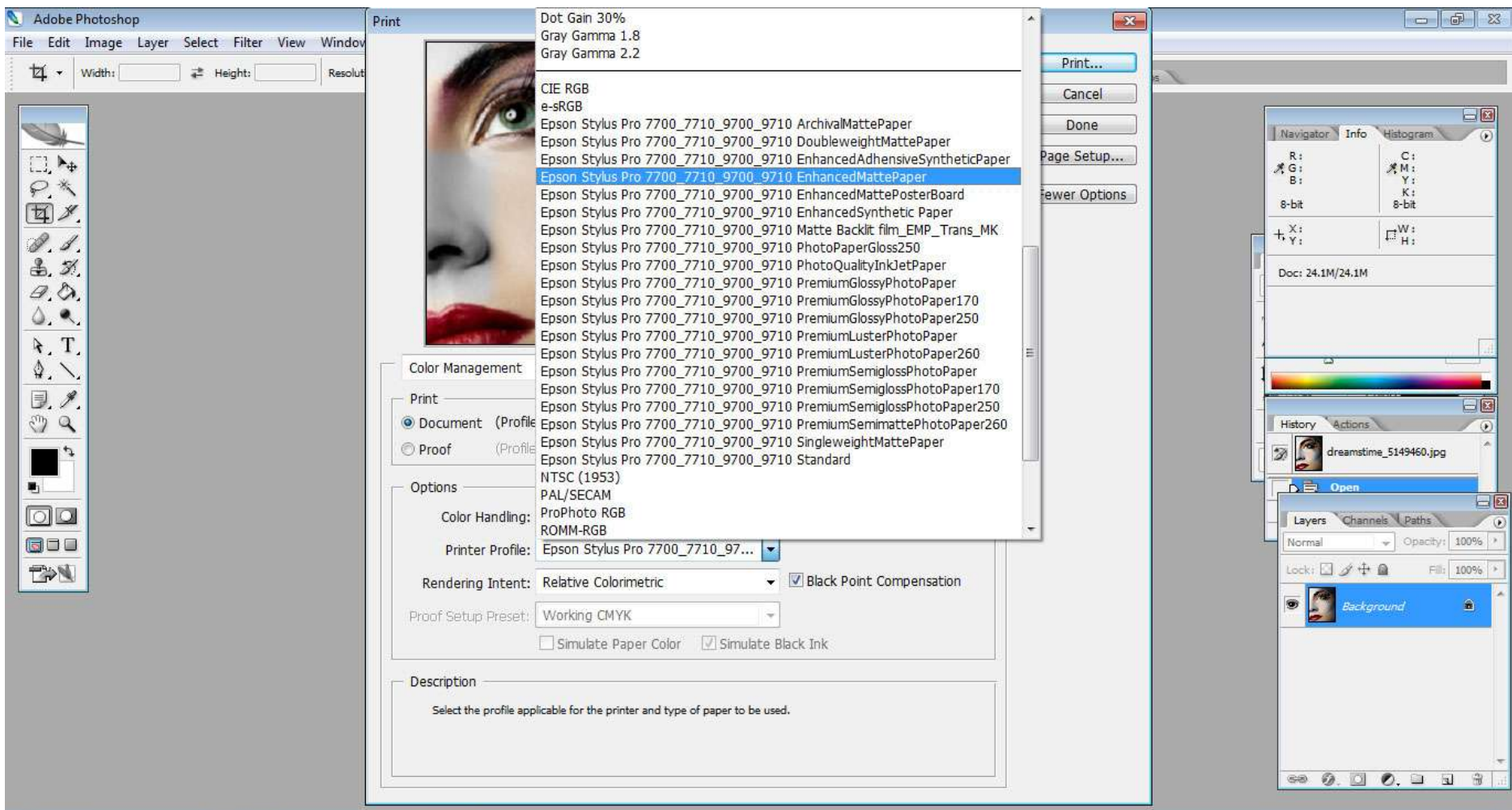
Then on Color Handling scroll down and choose **Let Photoshop Determine colors**

The screenshot shows the Adobe Photoshop Print dialog box. The main window displays a close-up of a woman's eye with dramatic makeup. The dialog box is divided into several sections:

- Position:** Top: -3.3 cm, Left: -2.98 cm, Center Image
- Scaled Print Size:** Scale: 100% Scale to Fit Media, Height: 35.715 cm, Width: 26.381 cm, Show Bounding Box, Print Selected Area
- Color Management:**
 - Print: Document (Profile: sRGB IEC61966-2.1), Proof (Profile: N/A)
 - Options:
 - Color Handling: **Let Photoshop Determine Colors** (selected)
 - Printer Profile: Let Printer Determine Colors
 - Rendering Intent: Separations, No Color Management
 - Proof Setup Preset: Working CMYK
 - Simulate Paper Color, Simulate Black Ink
 - Description: To preserve appearance, Photoshop will perform any necessary conversions to color numbers appropriate for your selected printer.

On the right side of the Photoshop interface, the Navigator, Info, Histogram, History, and Layers panels are visible. The Layers panel shows a single layer named 'Background' with 100% opacity and fill.

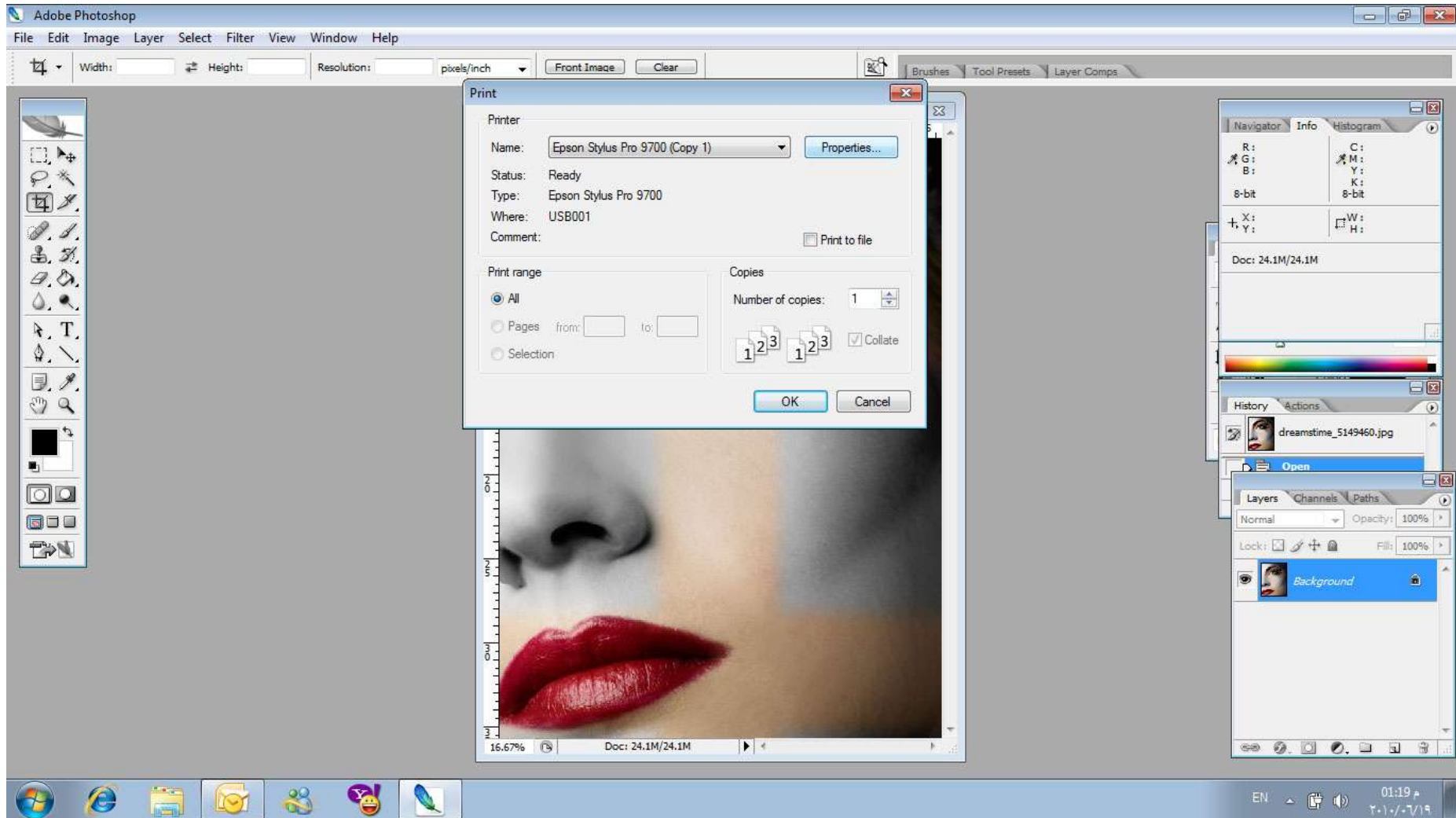
Then on Printer Profile when you scroll down you will find many profiles choose the profile That fit your media and if its not exist then choose matheanything closer for your media



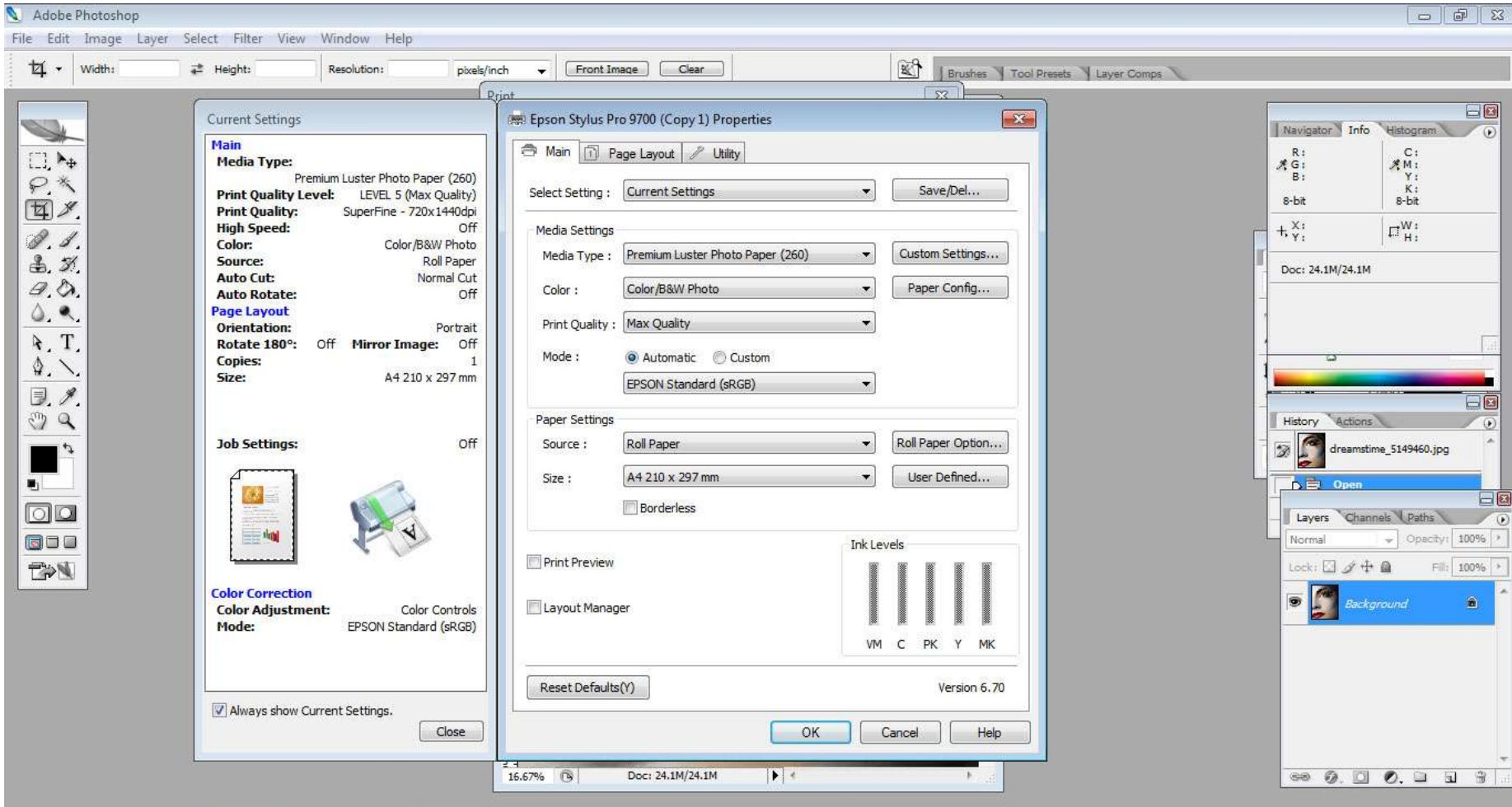
After choosing your profile click on print

after click print as previous page maybe it will show critical window say that your design will exceed the size of the page click on proceed.

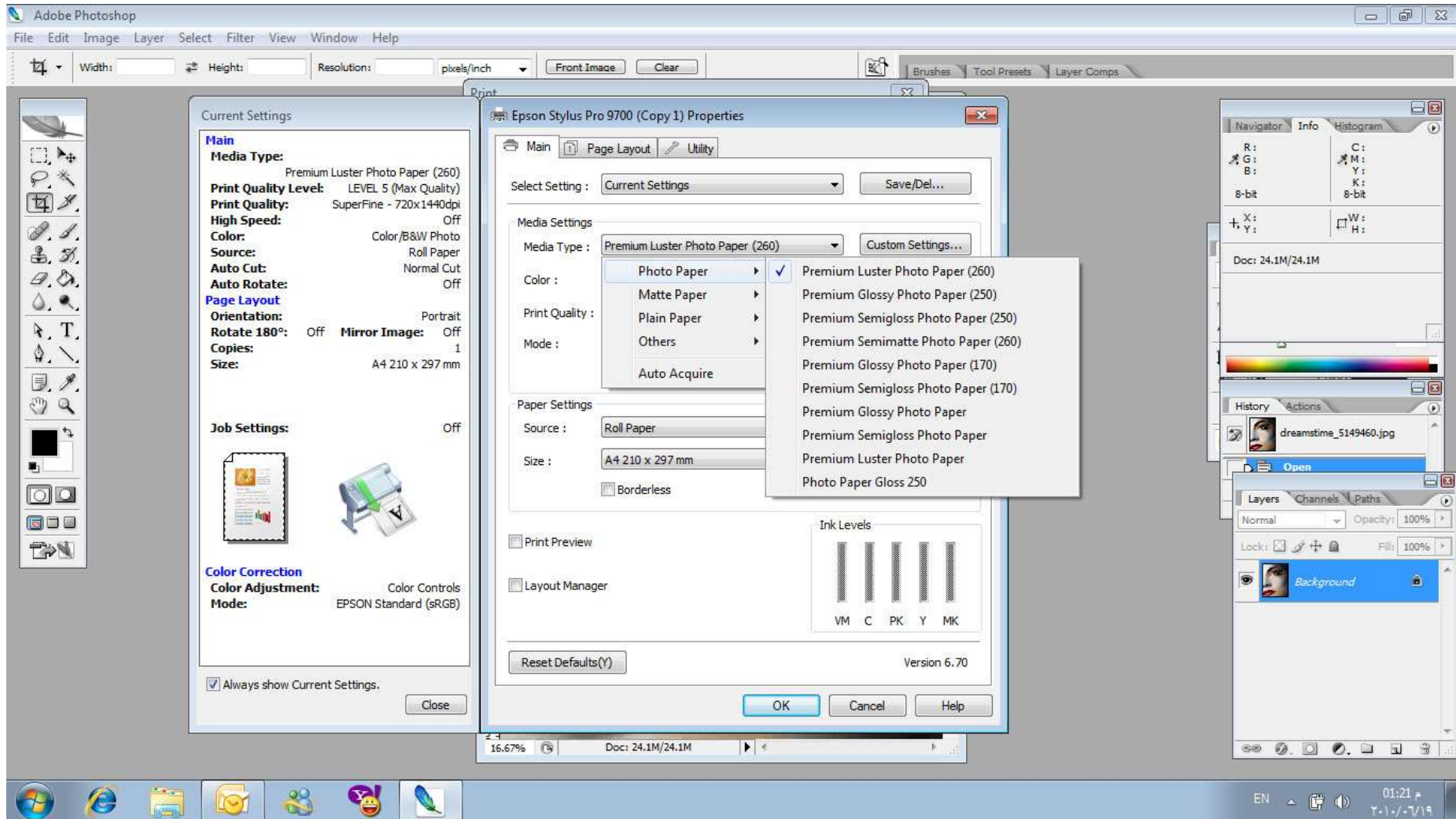
Then it will show window see picture below, choose the printer name “Epson Stylus pro9700” Then click on “Properties”.



When you click on properties it will open new window same the picture below where you can Control your printing.



Choose media type so the controller will choose the best color adjustment for your design



On color you don't need to change anything unless you want to print Black and white

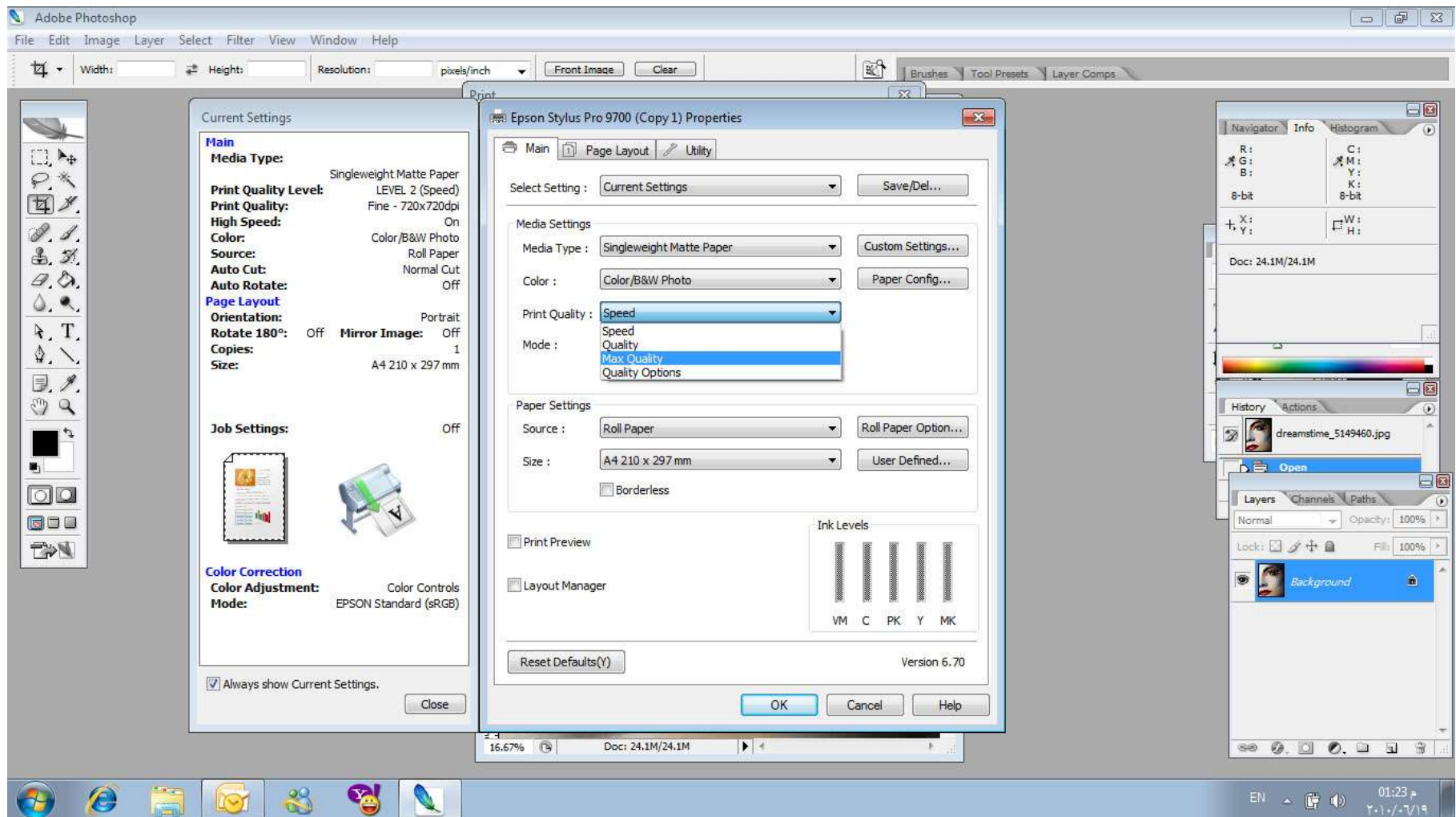
Then you have print Quality when scroll down you will find 4 options:

1- Speed: which it will be the fastest printing and low quality.

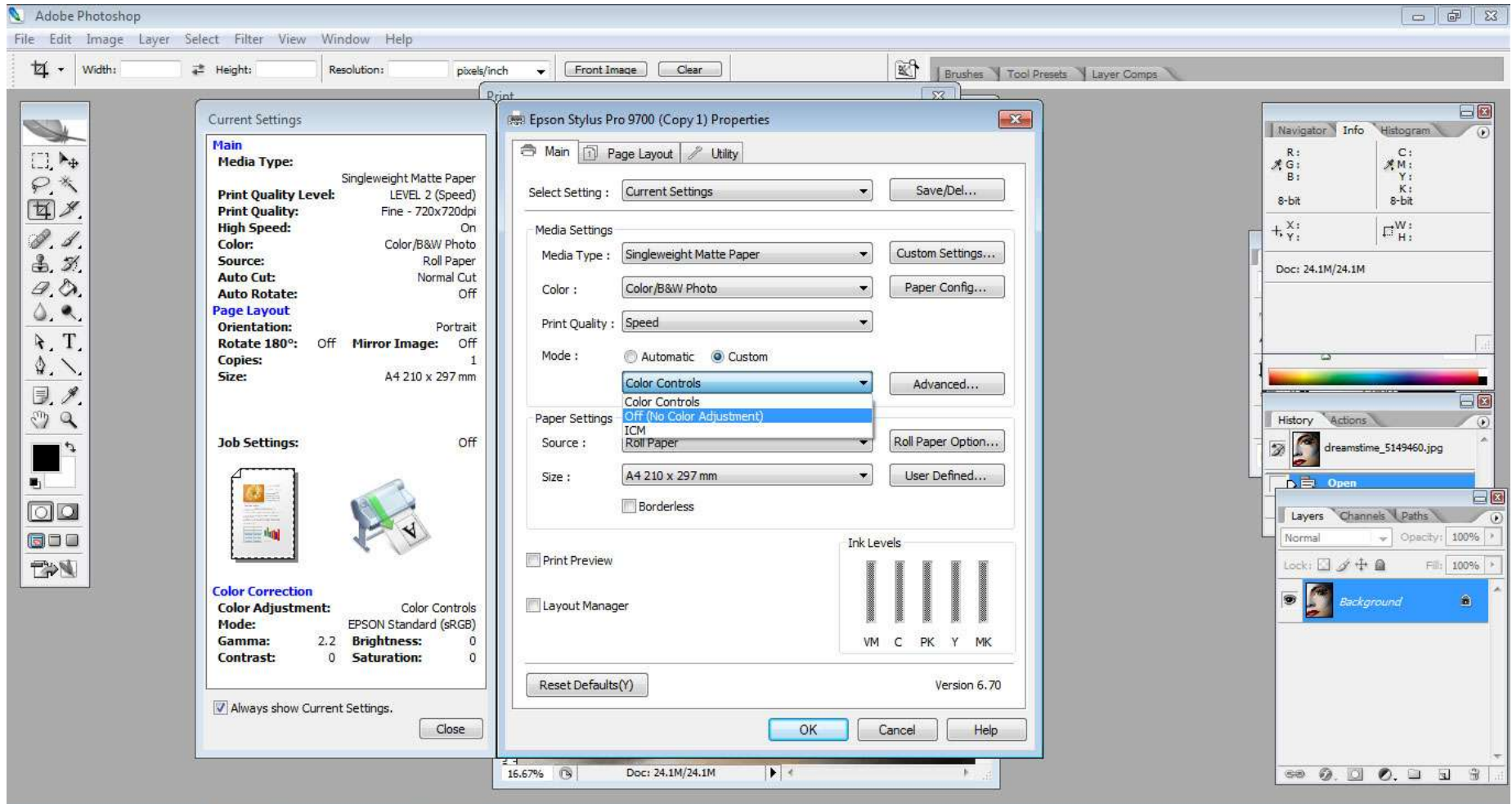
2- Quality: which it will be good speed good quality

3- Max Quality: which mean it will be the best quality for printing.

4- Quality Option it will open new window where you will see all options about printing and you can choose manually how you want to print.

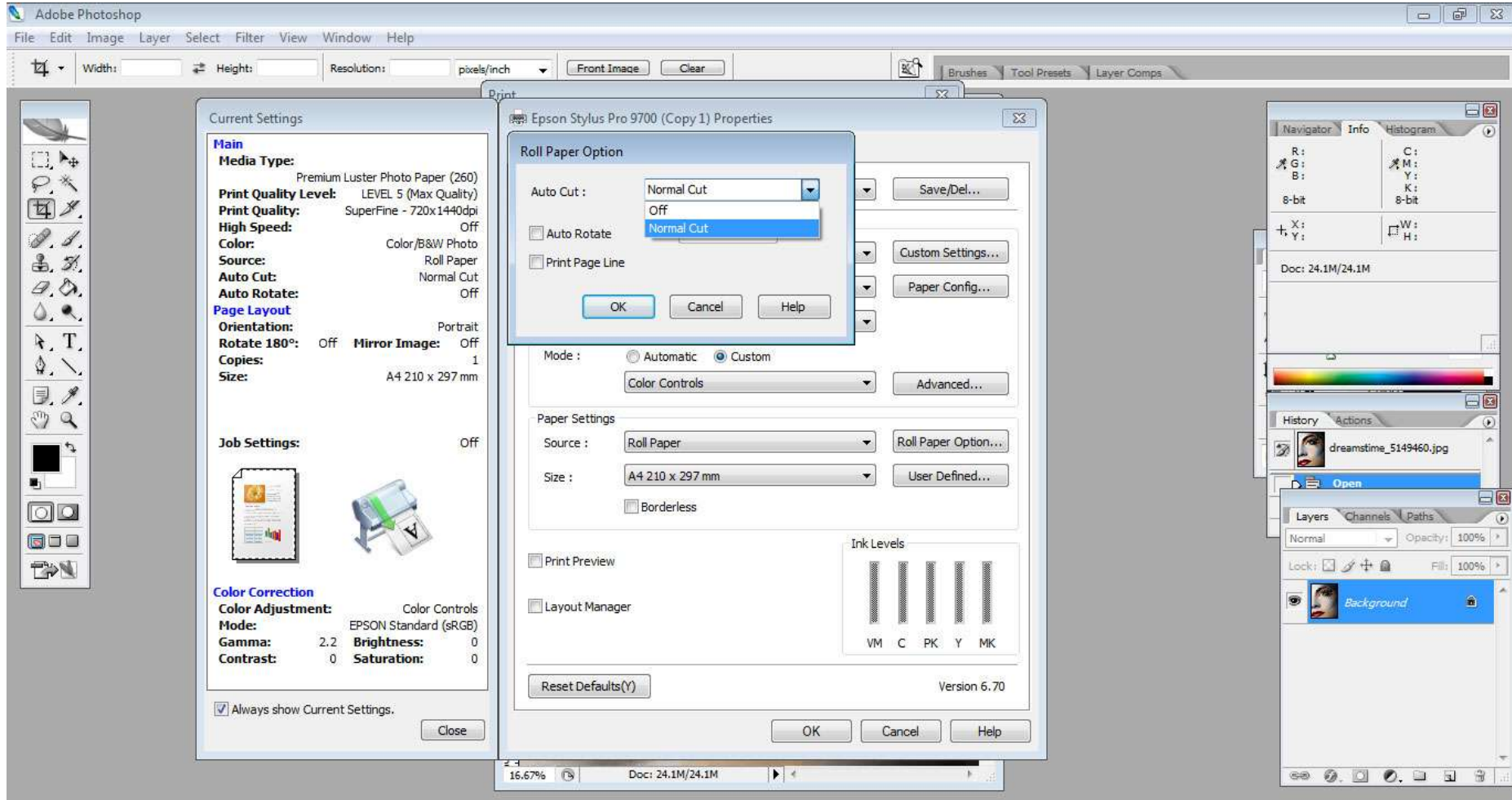


Then on mode you should use customs and then scroll down and choose off (no color adjustment); because you already have been choose profile for media.

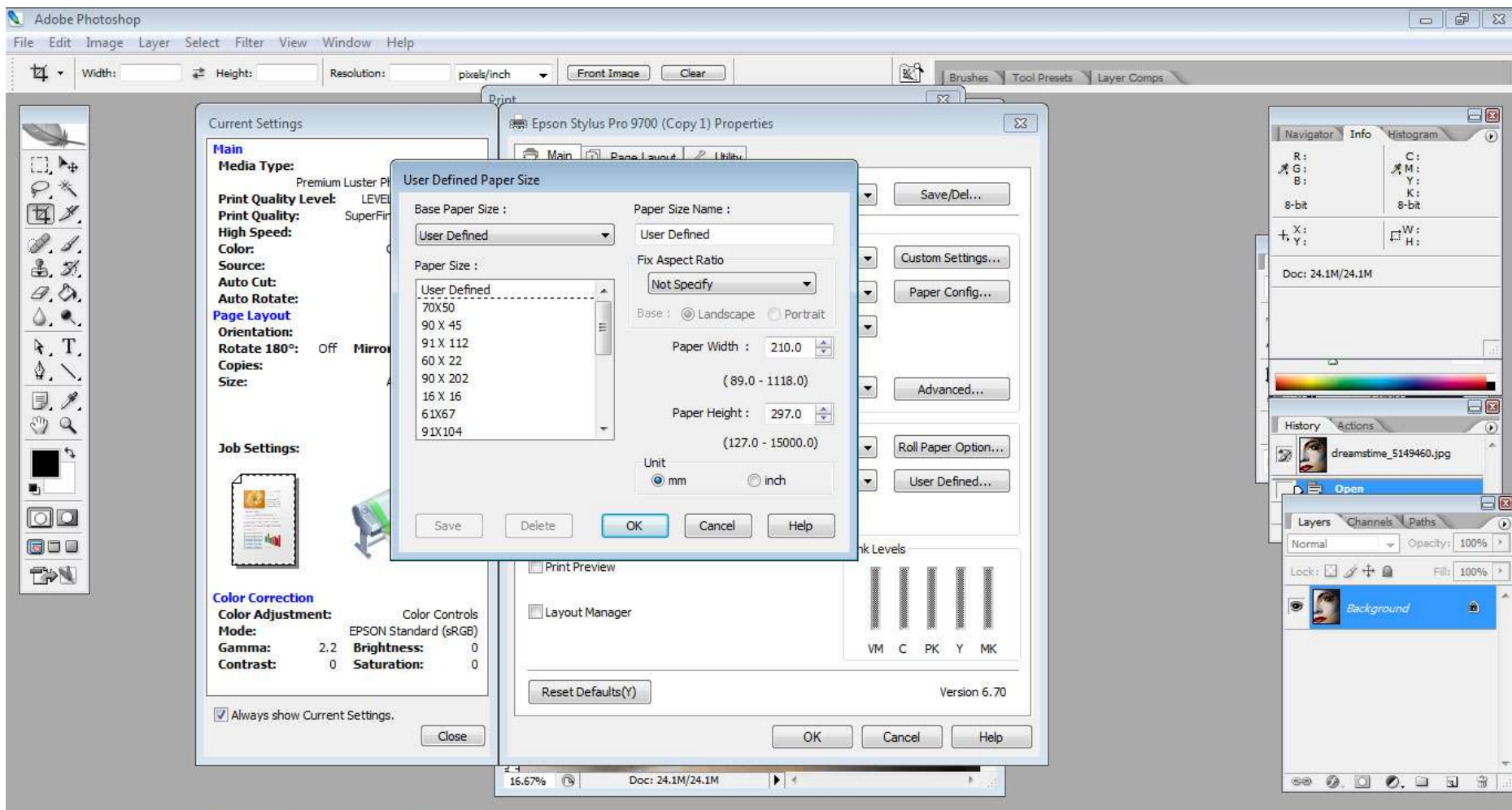


Then on source when scroll down you will find 3 options if its Sheet or roll or Roll banner
Choose the one fits your media.

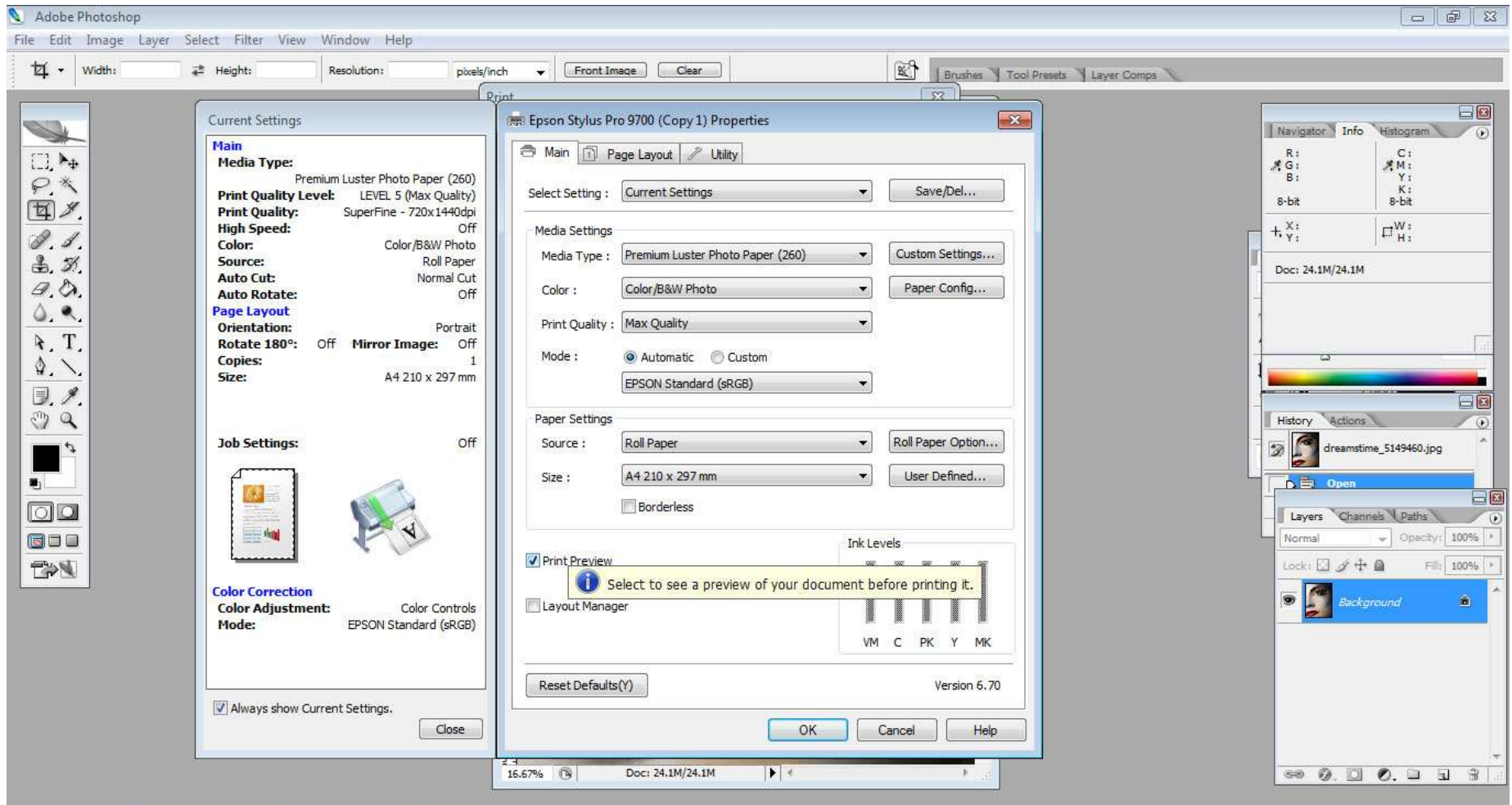
Then when you click on Roll paper option small window will appear to choose if you want to
Disable auto cut or auto rotation or print page lines



Then after that there paper size: when scroll down it will show some standard sizes and Sizes you had entered before if nothing fits your design size click on User Defined. It will open new window like picture below. On Paper name write the size you want then On paper width type width size in mm. and in height type height size in mm Then you should save this size for future use that why you should make sure to type the Paper size name correctly and make sure to save it then ok



Then you have option name borderless if you want to print Edge to Edge
Print preview it will show you the design before start printing to make sure the size is right.



Then it will back to print picture if you want to make many copies then print it will go to preview page then after check choose print it will start printing